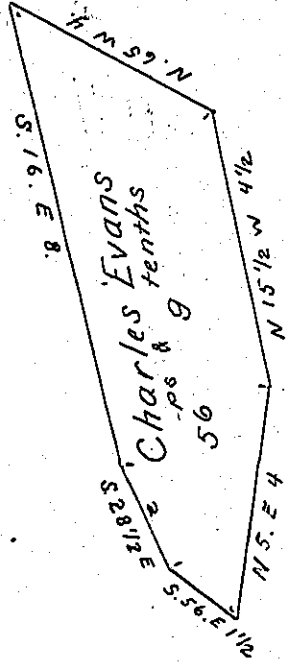


York County Shore



Lancaster County Shore

A Draught of Middle Island Situate in the river Susquehanna. Manor Township Lancaster County about forty perches west of Garden Island and about the same distance East of the head of Rock Island, containing fifty Six perches and Nine tenth of a perch Strict Measure. Surveyed in Pursuance of a Warrant dated the 1st day of October anno Domini 1811 granted to Charles Evans.

To Jacob Spangler Esq^r. } pr Jacob Hibshman D.S.
 Surveyor General

IN TESTIMONY that the above is a copy of the original remaining on file in the Department of Internal Affairs of Pennsylvania, made conformably to an Act of Assembly approved the 16th day of February, 1833, I have hereunto set my Hand and caused the Seal of said Department to be affixed at Harrisburg, this ninth day of September 1904.

Jacob P. Brown
 Secretary of Internal Affairs.